

LOMBARDINI USA

"Your Partner, Not Your Competitor"

LDW 1503 CHD

Low Speed Power Unit

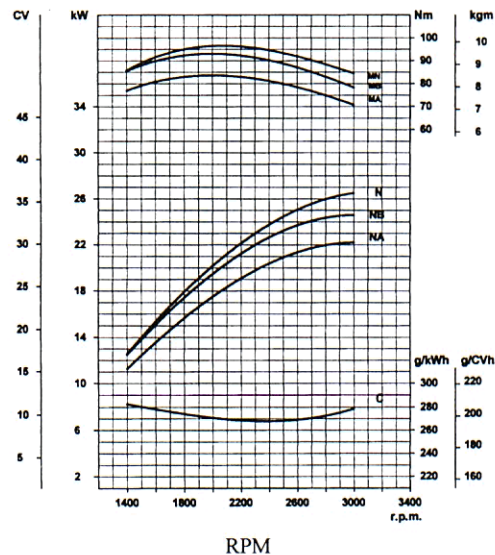
INTERMITTENT HP RATING @ 1800 RPM

Nb. ISO 3046 (kW/HP) = 17.3/23.2

Low Speed Open Power Unit Includes: Base Engine, Mounted Top Tank Radiator, Radiator Fan Guard, Mounted Air Cleaner, Muffler, Muffler Guard, Pusher Fan, Fuel Filter w/ Valve, 12 Volt Electric Starter Motor, 45 Amp External Alternator, Mounting Feet, Mounted Control Panel, A-2 Regulation @ 1800 RPM, SAE 5 Housing, C 107 Flywheel

TECHNICAL SPECIFICATIONS:

NO. OF CYLS	3
BORE x STROKE (mm)	88 x 85
DISPLACEMENT (cc)	1551
OVERALL DIMS. L x W x H (mm)	728 x 530 x 867
MAX. SPEED (RPM)	1800
MIN. CONT. SPEED (RPM)	900
N. ISO 1585 (kW/HP)	18/24
Nb. ISO 3046 (kW/HP)	17.3/23.2
Na. ISO 3046 (kW/HP)	15.8/21.2
MAX TORQUE (Lb.FT/RPM)	67.4/1800
SPC. FUEL CON (g/kWh)	275
ACT. FUEL CONS (gal/h)	1.33
OIL SUMP CAPACITY (l./Qts.)	3.8/4.0
DRY WEIGHT (kg/lb.)	200/440.9

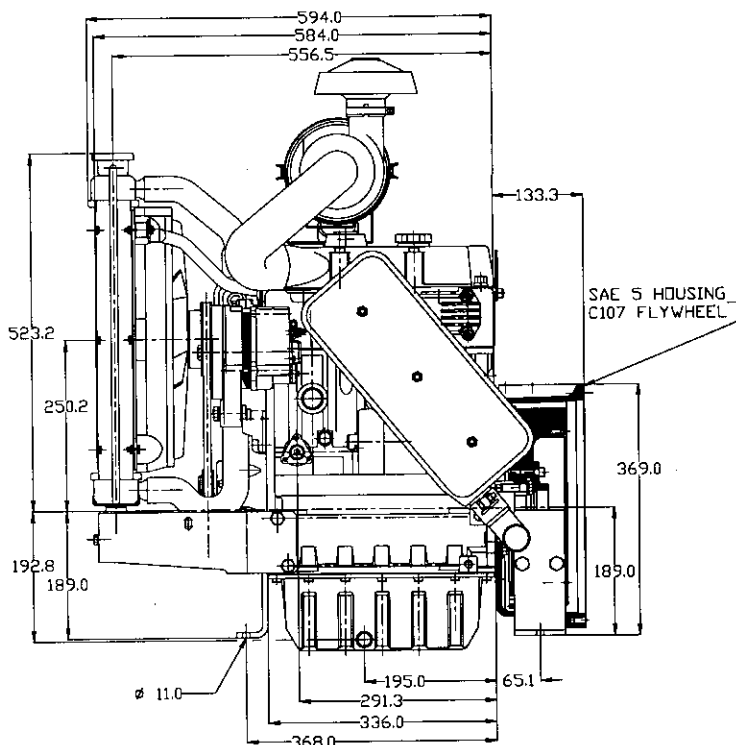
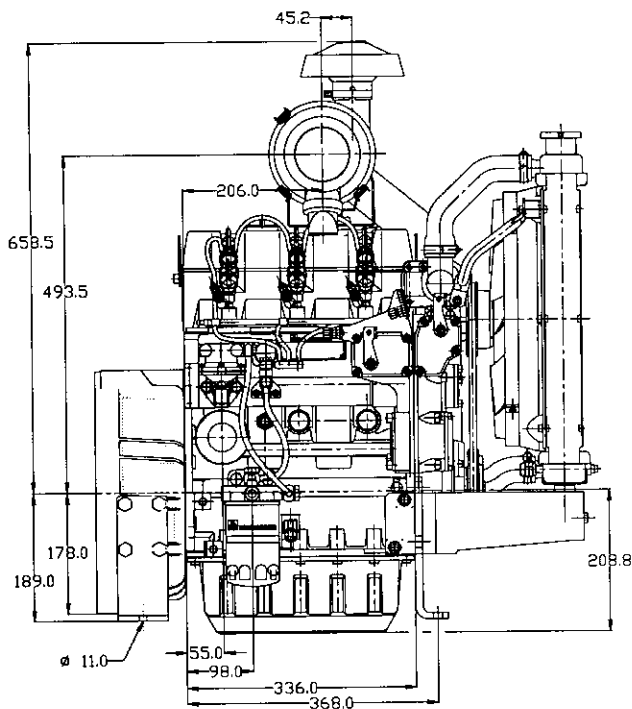


Lombardini USA Inc.
 2150 Boggs Road, Building 300, Suite 300
 Duluth, GA 30096
 Tel: (770) 623-3554 FAX (770) 623-8833
 E-mail- lusa@lombardiniusa.com
 Internet- <http://www.lombardiniusa.com>

Sede di Reggio Emilia



ISO 9001 Cert. n. 0446



ACCESSORIES AVAILABLE:

STARTING: 12V ELECTRIC, OPTIONAL CHARGING SYSTEMS.

POWER TAKE OFF: SAE HOUSINGS & DRIVES, SHAFT EXTENSIONS, HYDRAULIC DRIVES.

AIR CLEANERS: DRY TYPE.

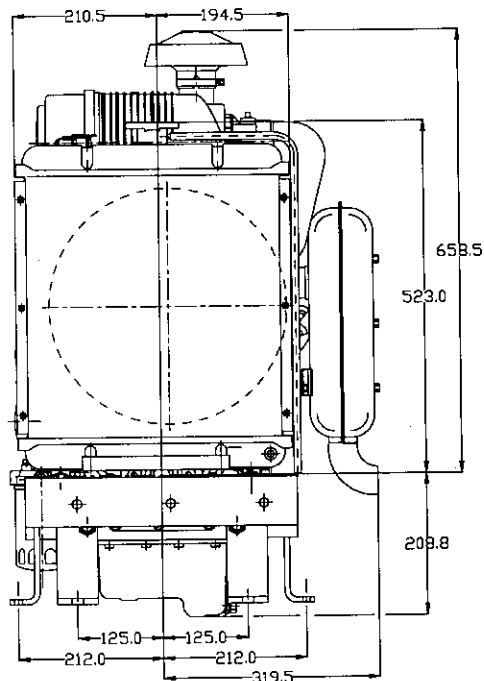
EXHAUST FITTINGS: VARIOUS DESIGN MUFFLERS & MANIFOLDS, MUFFLER GUARDS, LOOSE FLANGES.

SAFETY SHUTDOWN SYSTEM: FOR HIGH COOLANT TEMP AND LOW OIL PRESSURE

FUEL SYSTEM: REMOTE FUEL FILTERS, FUEL LIFT PUMP.

COOLING SYSTEM: ENGINE MOUNTED AND REMOTE RADIATORS, SUCTION AND PUSHER FANS.

MISC: MOUNTING FEET, CONTROL PANELS.



BASIC CONSTRUCTION DETAILS:

4 STROKE DIESEL, LIQUID COOLED, COUNTER CLOCKWISE ROTATION (PRIMARY PTO), INDIRECT FUEL INJECTION ; PRESSURE LUBRICATION BY GEROTOR PUMP, FULL FLOW LUBE FILTER, AUTOMATIC EXTRA FUEL DEVICE FOR COLD START EASE, VARIABLE SPEED GOVERNOR, CAST IRON CRANKCASE WITH REBORABLE CYLINDERS, CAST IRON CYLINDER HEAD