



SERVICE EQUIPMENT RATED TRANSFER SWITCHES 100-4000 AMPERES

Why Service Equipment Rated Transfer Switches?

When the entire load of an installation requires standby emergency power for complete protection against commercial power interruption, it becomes necessary to have the ATS as close to the point of service entrance as possible. And nobody does this better than Cutler-Hammer.

With our Service Equipment Rated Transfer Switches, installation can be made directly at the point of service entrance – while simultaneously eliminating the need for separate upstream disconnect devices and their respective power interconnections.



Cutler-Hammer

EATON

Cutler-Hammer Transfer Switch Equipment Features and Benefits

TYPICAL APPLICATIONS

Users that have taken advantage of Service Equipment Rated Transfer Switches include water and waste water treatment facilities, pumping stations, telecommunication relaying stations, industrial plants – any location where continuity of service is critical to all the loads.

BENEFITS

- All installation loads protected against extended power loss
- Lockable disconnect position permits safe downstream maintenance
- Eliminates need for separate upstream protective and service disconnect devices
- Combined service disconnect, overcurrent protection and ATS functions substantially reduce overall equipment and installation costs and save space
- Fewer components and power interconnections maximize circuit integrity and minimize maintenance requirements

FEATURES

- UL 1008 listed for service equipment
- Service disconnect "both-off" capability
- Integral overcurrent protection
- Lockout (when in disconnected position only)
- Indication of service disconnect
- Integrated design
- Disconnecting neutral assembly
- Ground fault protection capability-all ratings. (Required by code on ratings 480V and 1000A or higher)

SERVICE EQUIPMENT RATING

AVAILABLE ON THE FOLLOWING SWITCHES (SPECIFY OPTIONS 16 AND 37):

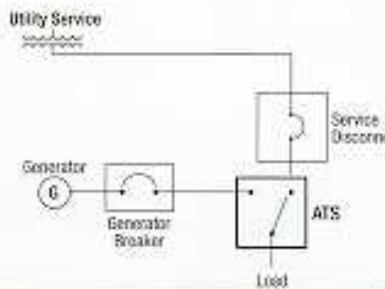
TYPE	DESCRIPTION	AMPS
ATHS/ATHI	Automatic	100-150
ATVS	Automatic	225-1000
ATVI	Automatic	225-4000*
ATVISP	Automatic, Draw-out	800-4000*
CTVISP	Automatic, Closed Transition	600-4000*
CTVISP	Automatic, Closed Transition, Draw-out	800-4000*
BIHS/BIHI	Combination Bypass Isolation	100-1000
BIVISP	Combination Bypass Isolation, Draw-out	800-3000
CBVISP	Combination Bypass Isolation, Closed Transition, Draw-out	800-3000
NTHS	Non-Automatic, Electrically operated	100-150
NTVS	Non-Automatic, Electrically operated	225-4000*
NTVSSP	Non-Automatic, Electrically operated, Draw-out	800-4000*

* 4000A Available as 3 pole only.

INSTALLATION COMPARISON

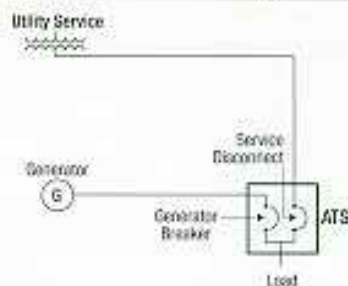
CONVENTIONAL METHOD...

- ATS
- Separate generator breaker
- Separate generator breaker enclosure
- Separate service disconnect
- Separate service disconnect enclosure
- Power cable/bus interconnections
- Installation of the separate components
- Extra space requirement
- Added maintenance requirement



CUTLER-HAMMER METHOD...

- ATS with service equipment features



Service Equipment Nameplate

For more information on Cutler-Hammer products and services, call 1-800-525-2000 or 1-732-417-5660, or visit our web site at www.cutlerhammer.eaton.com

Cutler-Hammer

Pittsburgh, Pennsylvania

PA 15A 03 S.E

APR 1999

Printed in U.S.A./TSG 2432

EAT•N